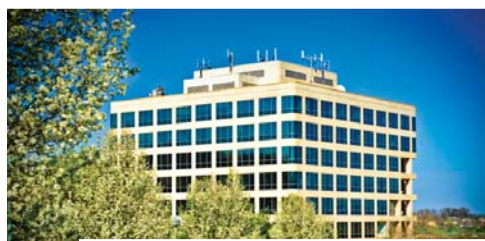


## About KIT

KIT Solutions, LLC (KIT) provides comprehensive, user-friendly cloud-based solutions for cost-effective grants and contracts management, for federal and state governments in the health and human services sector. KIT's online real-time performance-based grants management system allows customers to make data driven decisions, evaluate program performance and impact, and satisfy program reporting requirements. KIT aims to bring efficiencies to the state and federally-funded health and human services sectors through the application of state-of-the-art information science and technology.



For additional information contact:



412-366-7188

info@kitsolutions.net

www.kitsolutions.net

## Real-Time Data Visualization (RTDV)

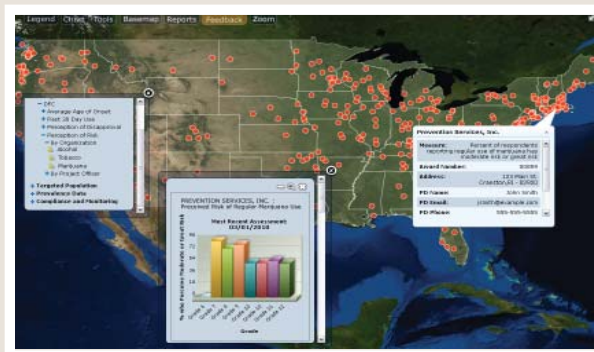


## Real-Time Data Visualization

KIT's performance driven Real-Time Data Visualization (RTDV) system is a GIS-based dynamic tool that was originally developed for SAMHSA's Center for Substance Abuse Prevention. This system was designed to make available at the fingertips of project officers, evaluators, and grantees program information such as financial allocations, program performance, compliance reporting and more. Other uses of the RTDV include mapping epidemiologic data, identifying geographic areas with particular health risks or protective factors, and providing data driven decision support in order to target health program efforts.

## RTDV Services

- Consultations on what data to display and how to represent it
- Use to interface with a single system or weave together data from multiple data services
- Configure RTDV for specific needs in your state
- Map to existing data systems while doing no harm to existing data



## KIT Services

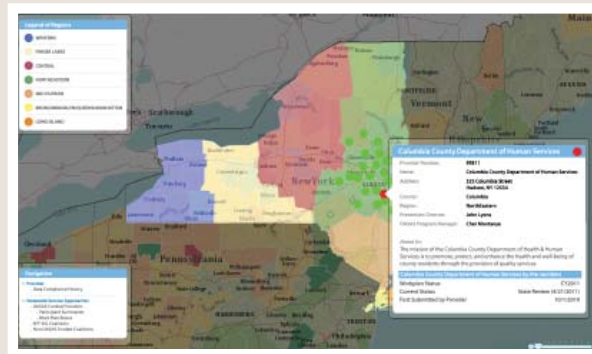
### State Services

Nineteen states have implemented statewide services for federal compliance reporting and statewide program management. Many of these states are now looking at the RTDV for support in making better data driven decisions.

### Federal Services

KIT collaborated with Federal agencies, such as SAMHSA and the CDC, to develop and implement interactive cloud-based tools to help federally funded grantees apply evidence-based practices and achieve intended outcomes and efficiently manage the grants. This enables grantees to easily enter data, submit reports, and access data on demand.

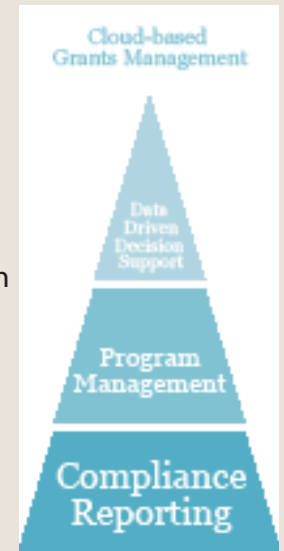
A GIS-based dynamic data visualization tool further enhances data driven decision solutions.



## How KIT can help

KIT's services consists of our proprietary IT solutions, open source technology, and third-party licensed software. The unique configuration of multiple sources of mature technologies, combined with KIT's extensive experiences on data driven grants management, makes our solution a better, faster and cheaper

alternative to agency specific, custom built data collection and management systems. A grants management agency owns the data, but not the technology. Since what is needed by the agency is consistent and reliable data for management decision making, there is no need to own and continue maintaining a custom built data system. Owning a solution also means owning all of the support and maintenance headaches with it.



## Differentiators

- Thought leadership in cloud-based solutions for the health and human services sector
- Configurable tools to assist in the delivery of evidence-based behavioral health programs
- Data driven decision support services tailored to improving the efficiency and effectiveness of spending
- 10+ years experience supporting 2,300 organizations and 15,000 end users in the health and human services sector